

Living up to Life

Leica
MICROSYSTEMS



Leica DM Multiple Viewing Systems

Great Discoveries Begin with Vision

Leica Microsystems DM Multiple Viewing

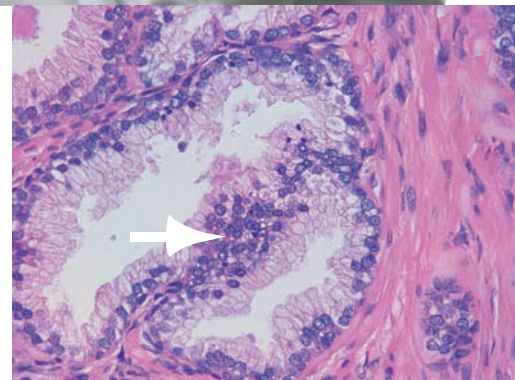
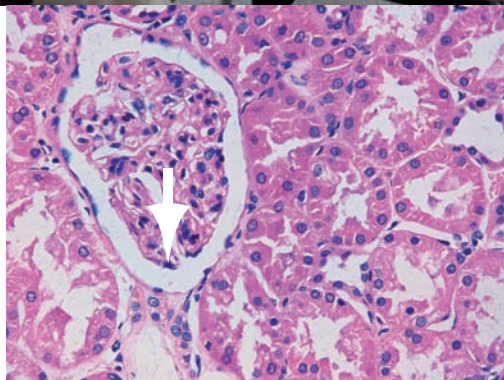
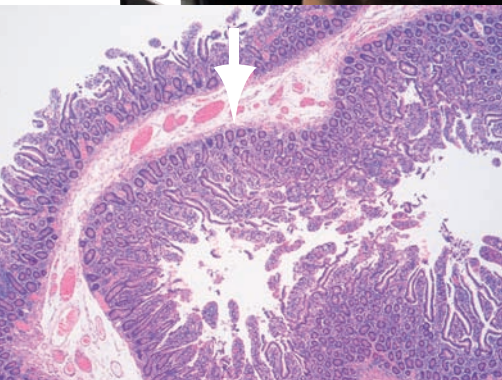


The Leica DM1000 shown with a two station system

Leica's multiple viewing systems are specially designed, flexible and highly modular. They attach to a single microscope and allow users to simultaneously view high resolution images of the same specimen live.

Each user receives first-hand experience in the analysis of samples, while achieving a real sense of working with a microscope – including the advantage of an unmatched image quality, that only the true microscope image offers. The multiple viewing systems deliver outstanding color and intensity balance from station to station. Infinity corrected, high quality, all glass optics with precision coatings produce a crisp, clear image for every viewer.

The systems are constructed with whole metal housings and sturdy metal pillars to securely support the external viewing tubes giving exceptional stability and durability.



Systems

All stations are 360 degree rotatable whether you choose a two, three or twenty station model. Crisp imagery in the Leica tradition is combined with an up to 22 mm field of view.

Together with the range of ergonomic tubes, the system delivers comfortable viewing height and ample elbow room, thus offering outstanding comfort to the user.

Standard systems are available for 2, 3, 4, 5 and 10 users. Custom systems can be created to fit up to 20 viewing stations and due to the modularity they can easily be accommodated even in unique room sizes and shapes. Leica has an ergonomic solution to tailor the systems to the needs of the user and their specific laboratory applications.

Systems are not restricted by the initial setup as Leica's modular systems can be upgraded in the field to meet any change in requirements.

The vision to point the way

A bright white LED illuminated arrow can be positioned to point out areas of interest anywhere in the field of view, clearly visible to all viewers at each station.

The vision to make experience count

Leica DM Multiple Viewing Systems are perfect devices for obtaining a second opinion, consultation or training, as all viewers see the same superb sample image live.

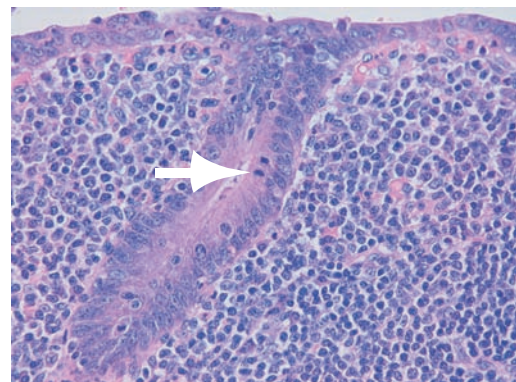
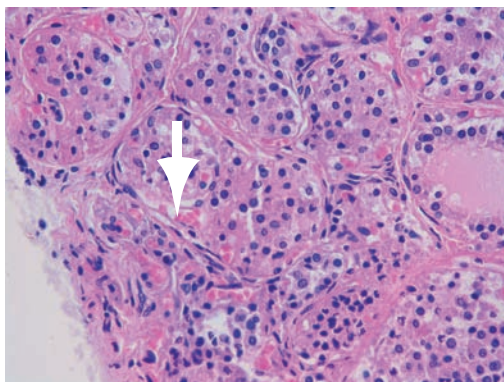
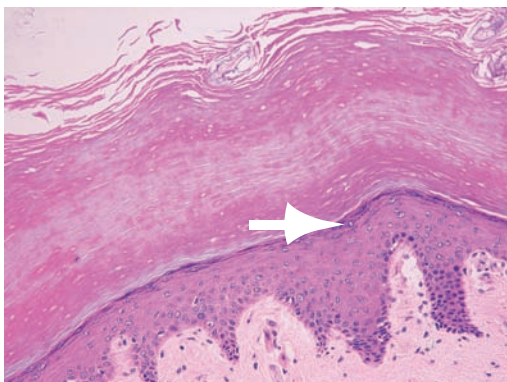
When every second counts, doctors use Leica multiple viewing systems for consultation during surgery to obtain an analysis and opinion from colleagues. Multiple viewing systems are invaluable for conferences between pathologists and staff. Residents use the systems during their training to analyze the features of cell structures and to learn how to make diagnoses.

In addition, the systems are also ideal for hands on instructions in a classroom setting. These attachments are easy to assemble and adjust to all the current Leica DM microscope series for clinical, research, and educational applications.

Whenever superb optical quality for multiple viewers is crucial, multiple viewing systems from Leica will exceed your requirements – from 2 to 20 stations, we'll keep you focused.

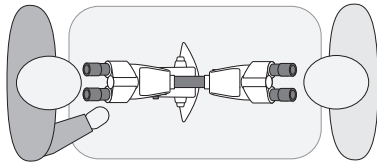


Leica DM IL LED with a two station system

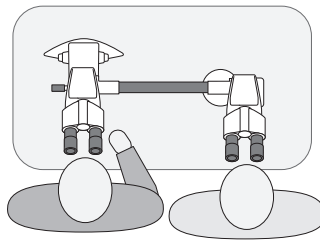


Multiple Viewing Systems Configurations

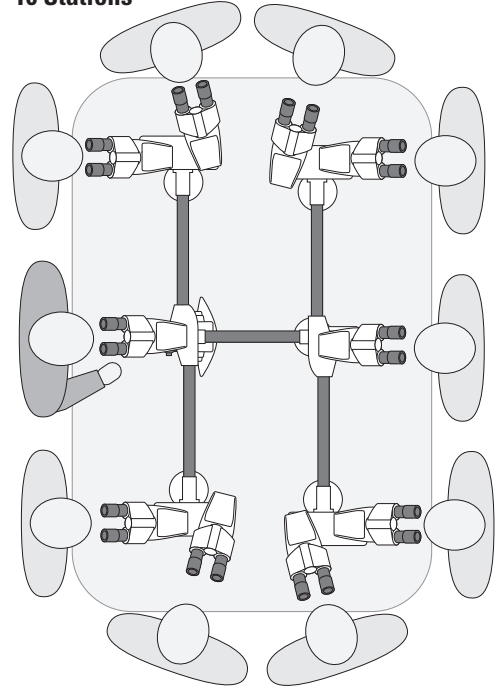
2 Stations, Face to Face



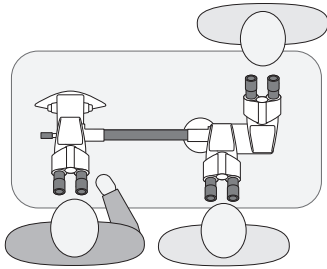
2 Stations, Side by Side



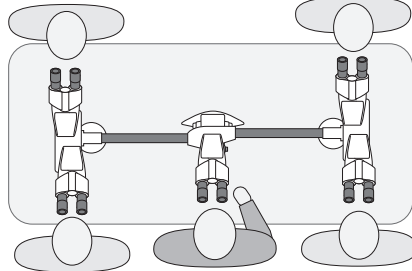
10 Stations



3 Stations



5 Stations



Custom Configurations

Large and small custom configurations can be designed easily to accommodate unique requirements such as different numbers of stations and room size or shape.

20 Stations

