

Living up to Life

*Leica*

MICROSYSTEMS

# Leitz Optilux

Affordable Innovation



# Affordable Innovation

Leica Microsystems, with 165 years of microscope design and manufacturing experience, combines the latest technology in optics, mechanics, and illumination in the new Leitz Optilux microscope.

## Robust construction:

- › Maintenance-free, sealed, brass shaft, focus mechanism; the same design that is used in Leica Microsystems' clinical microscopes provides accurate focus control over the life of the microscope
- › Spring-loaded, high-magnification objectives prevent broken specimen slides
- › Designed to International Safety Standards

## Optimized Illumination and Optics:

- › LED illumination saves the cost of replacement lamps and provides a cool white light for over 20 years of average use at 80% lower energy consumption
- › Leica EZLite™ illumination system provides an evenly illuminated field of view for accurate specimen viewing

- › The illumination system provides stable, true daylight quality with a wide brightness ratio of 200 to 1
- › Superb optical performance as a result of the illumination, objective, viewing tube, and eyepiece working seamlessly together

## Easy of use

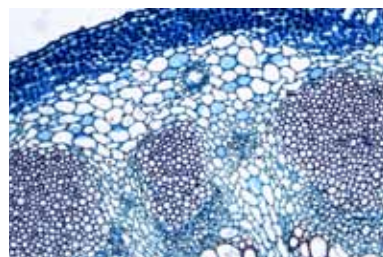
- › Coaxial focus mechanism for intuitive control
- › Compact size with small footprint for easy storage and carrying
- › Continuous light intensity control for comfortable viewing with specimens of various thickness and color
- › Monocular EZTube™ with integrated eyepiece prevents loss and also provides continuous 360° tube rotation for shared viewing and easy storage



Convallaris - Lily of the Valley



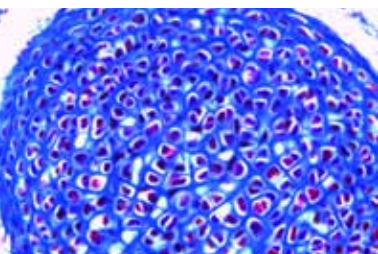
Taste Buds



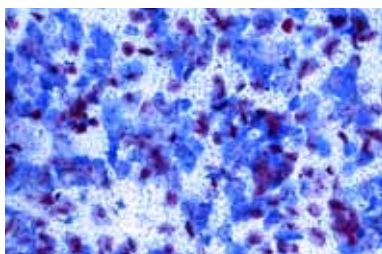
Sunflower



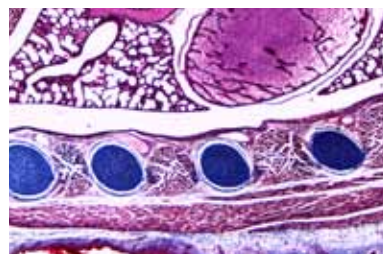
Giant Chromosomes



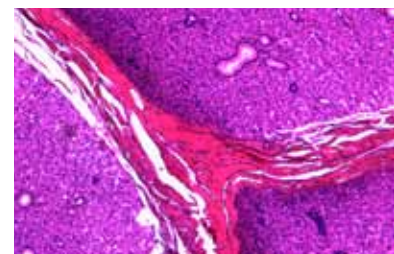
Mouse Embryo



Squamous Epithelium



Mouse Embryo



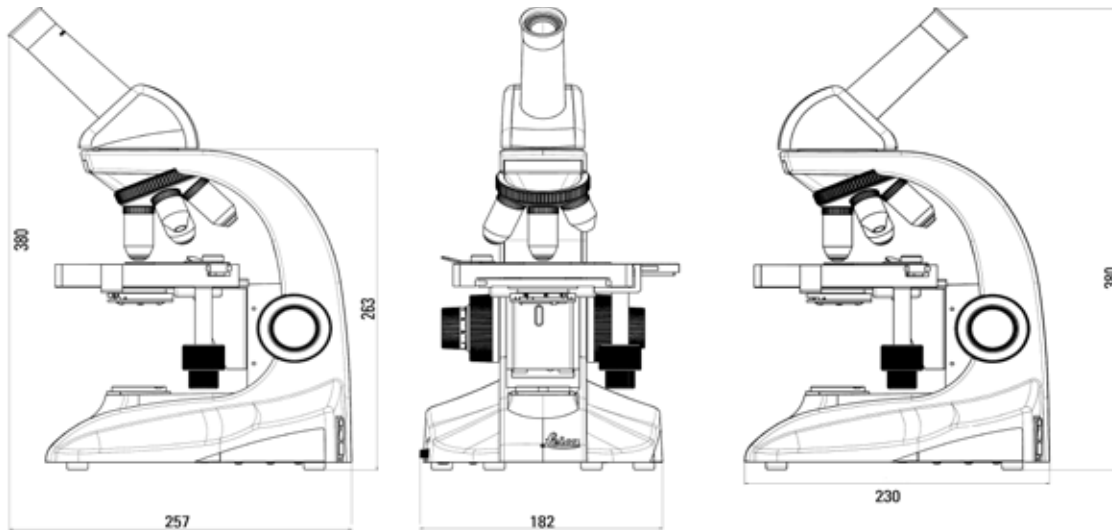
Parotid Gland



### Benefits: Leitz Optilux

- › Maintenance free brass shaft focusing mechanism for years of trouble free use
- › Built-in mechanical stage with low position X/Y controls for accurate specimen movement at high magnifications
- › Leitz EZLite™ for optimized image quality across the full field of view

## Dimensions



## Specifications Leitz Optilux

### EZTUBE™ MONOCULAR TUBE

- › 45 degree viewing angle
- › 10×/18 eyepiece integrated into eyetube
- › Attached to stand with 2 set screws
- › Rotatable mounting
- › Available with and without pointer

### STAND

- › Stand shape protects controls
- › Stand construction – die-cast aluminium
- › External fuses
- › Knurled nosepiece control
- › 4 position nosepiece
- › Drop in holder for 32 mm mounted or not mounted filters

### EZLITE™ ILLUMINATION

- › Preset field aperture
- › LED illumination – 6000 K temp, 25000 h life at full intensity
- › Continuous intensity adjustment
- › Illumination enough for viewing at lowest intensity
- › Simple polarizing kit available

### CONDENSER

- › Prefocused and precentered condenser
- › NA = 0.9/1.25 oil -  
Adjustable diaphragm with magnification labels

### STAGE

- › Mechanical Right handed  
Size: 13.5 cm (X) × 13.5 cm (Y)
- › Travel: 7.8 cm (X) × 3.6 cm (Y)
- › Front loading specimen holder for one standard slide

### FOCUS

- › Coaxial focus controls
- › Self-adjusting focus mechanism
- › 300 microns per fine focus rotation
- › Calibrated in 3 micron increments

### CERTIFICATIONS

- › cULus, CE, RoHS

### SHIPPING

- › Dimensions: 45 cm × 31.5 cm × 42 cm
- › Weight: 6.5 kg

### ARTICLE NUMBER

13 613 306 Leitz Optilux, Monocular, Abbe Condenser, Plan Objective 4×, 10×, 40×, 100×, Immersion Oil